



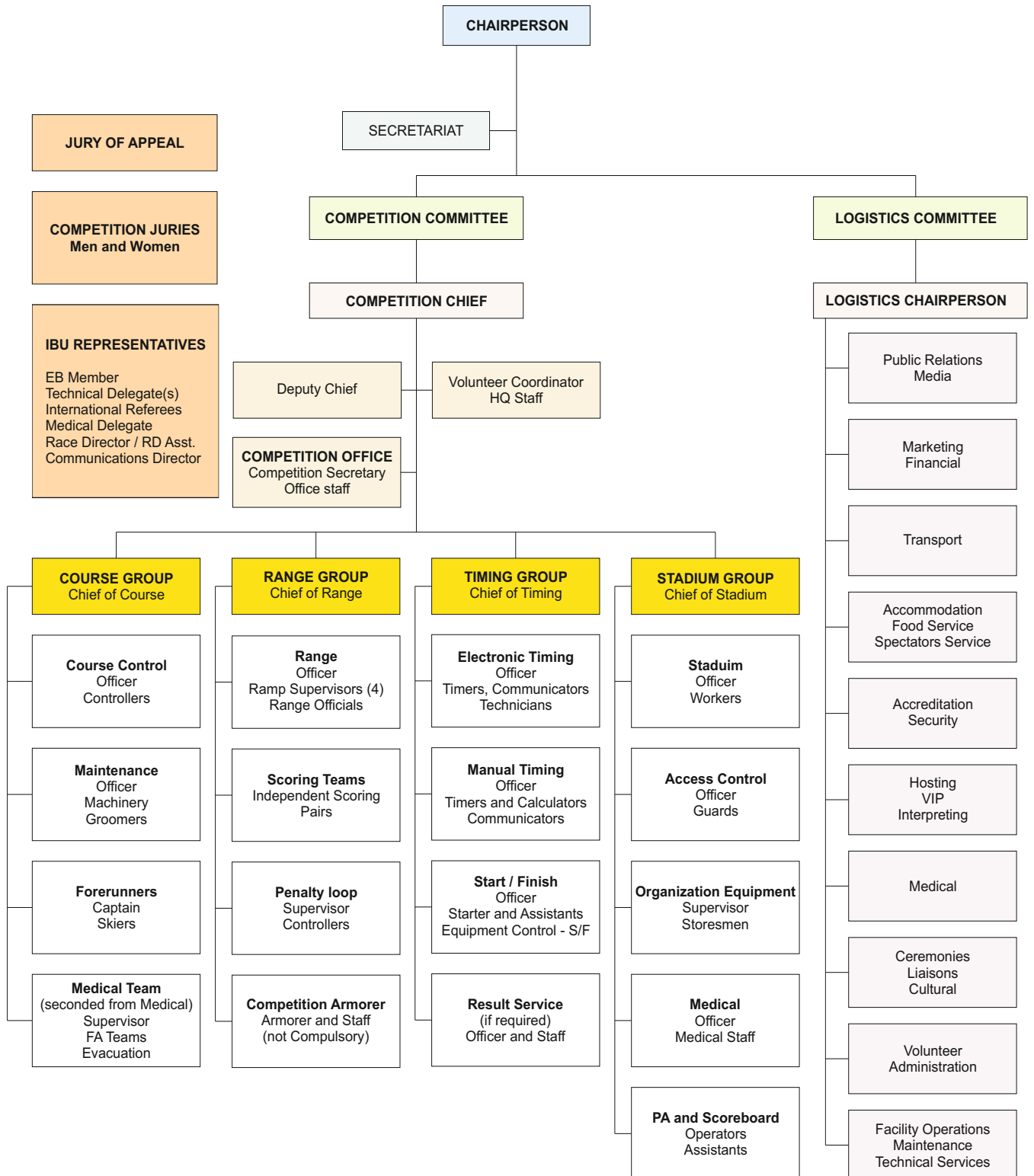
IBU

# **OC Guidelines**

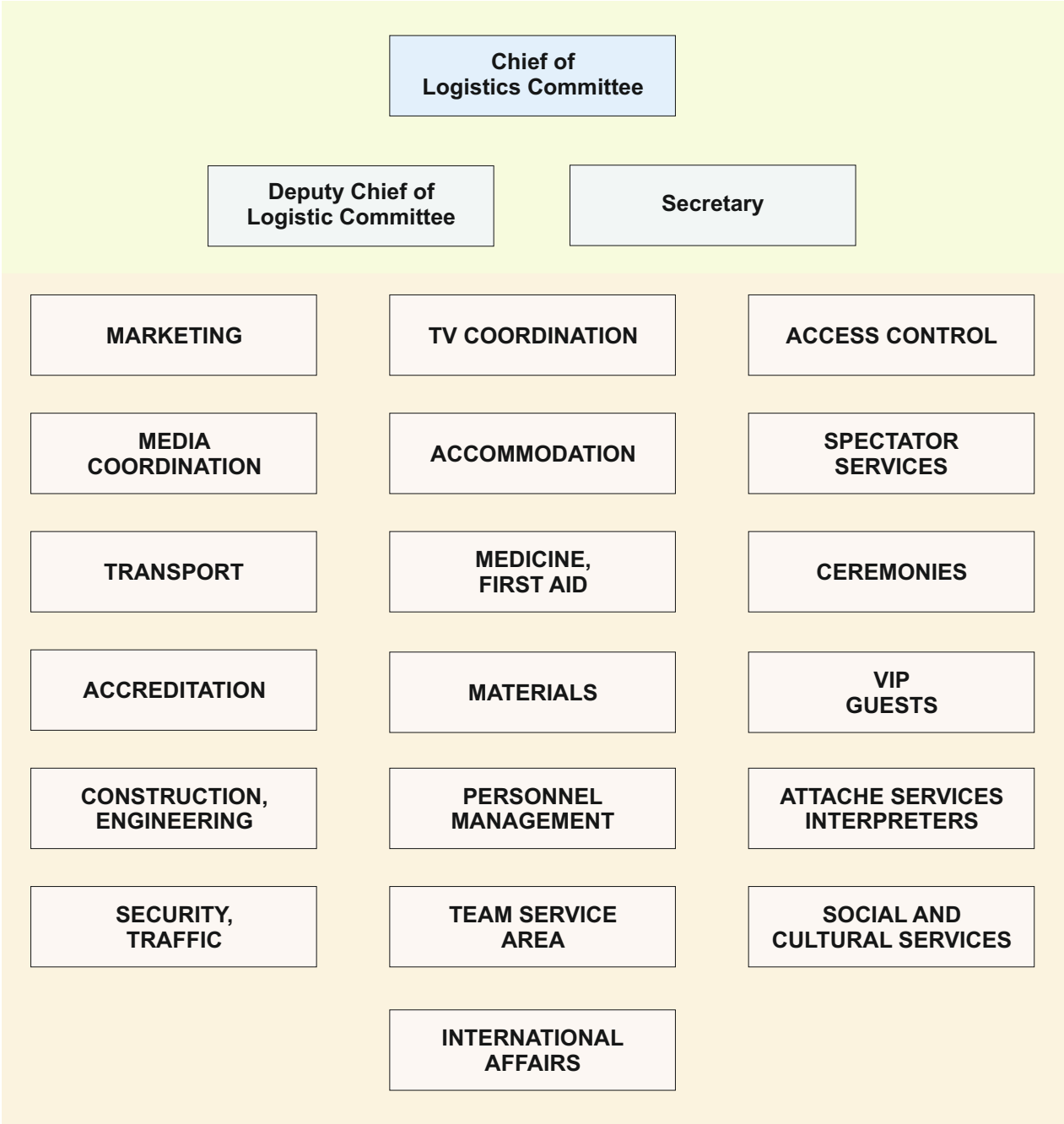
# **GRAPHICS**

# **UP-DATE 2014**

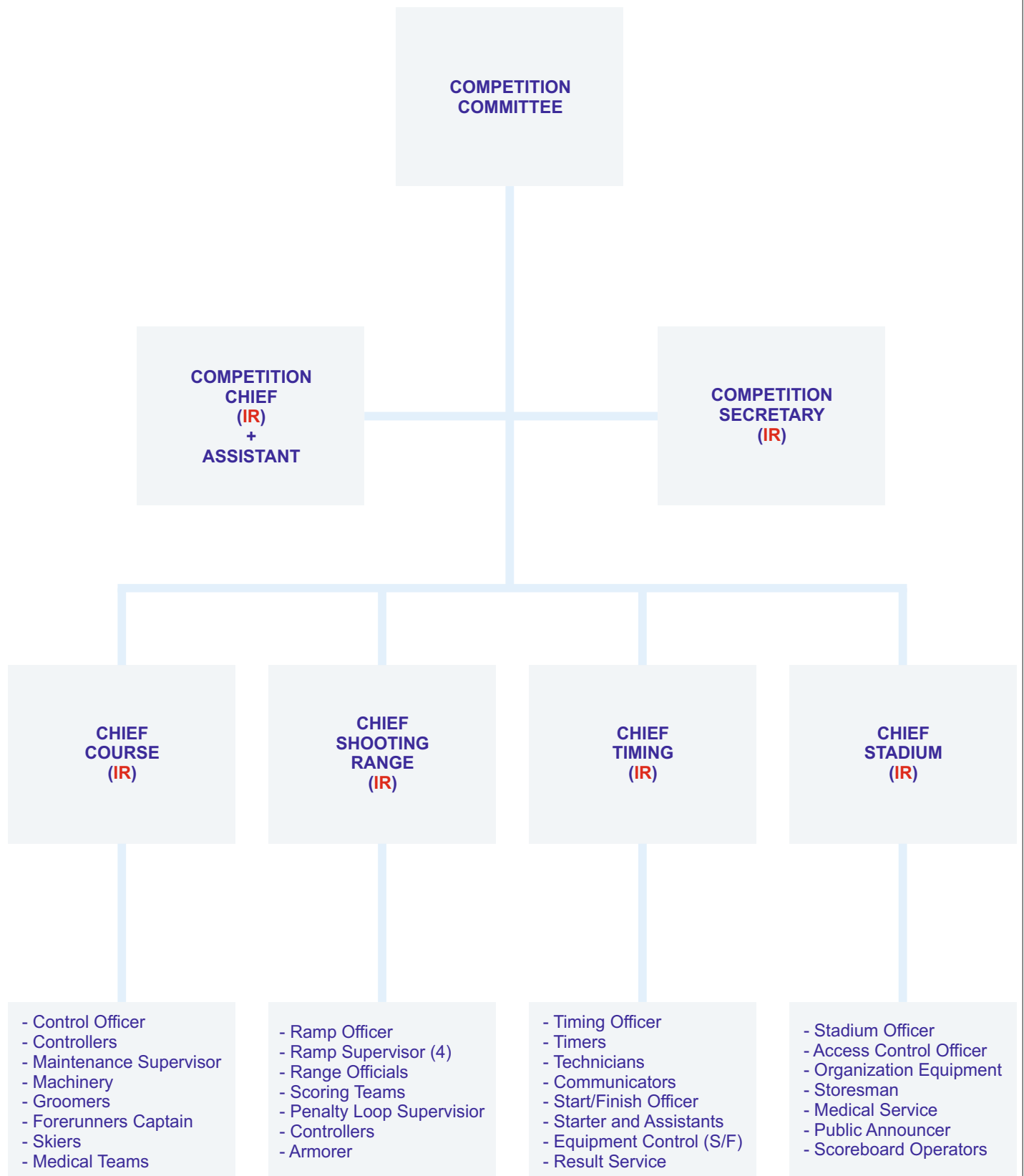
# BIATHLON ORGANIZING COMMITTEE CHART



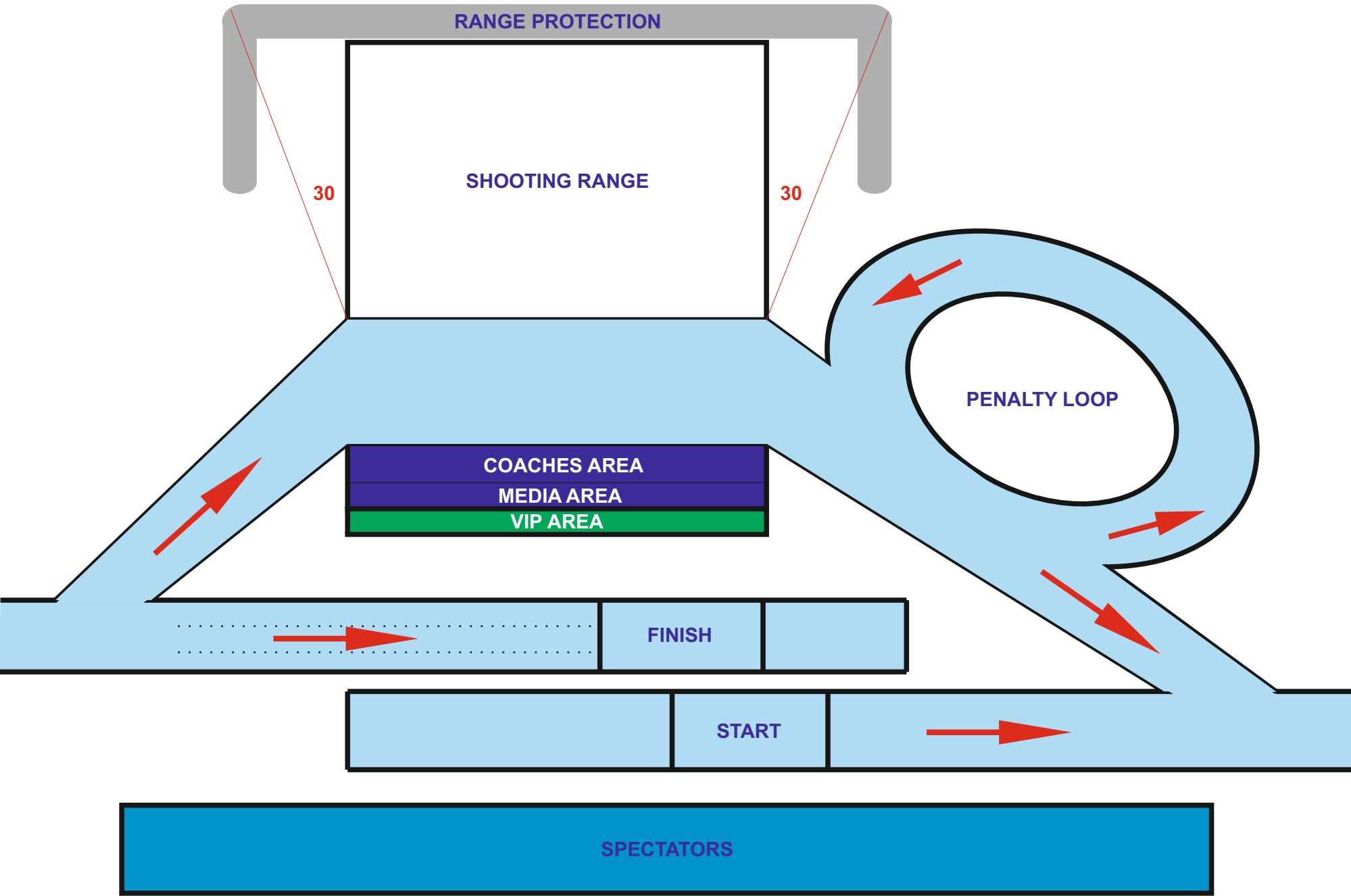
# LOGISTIC COMMITTEE CHART



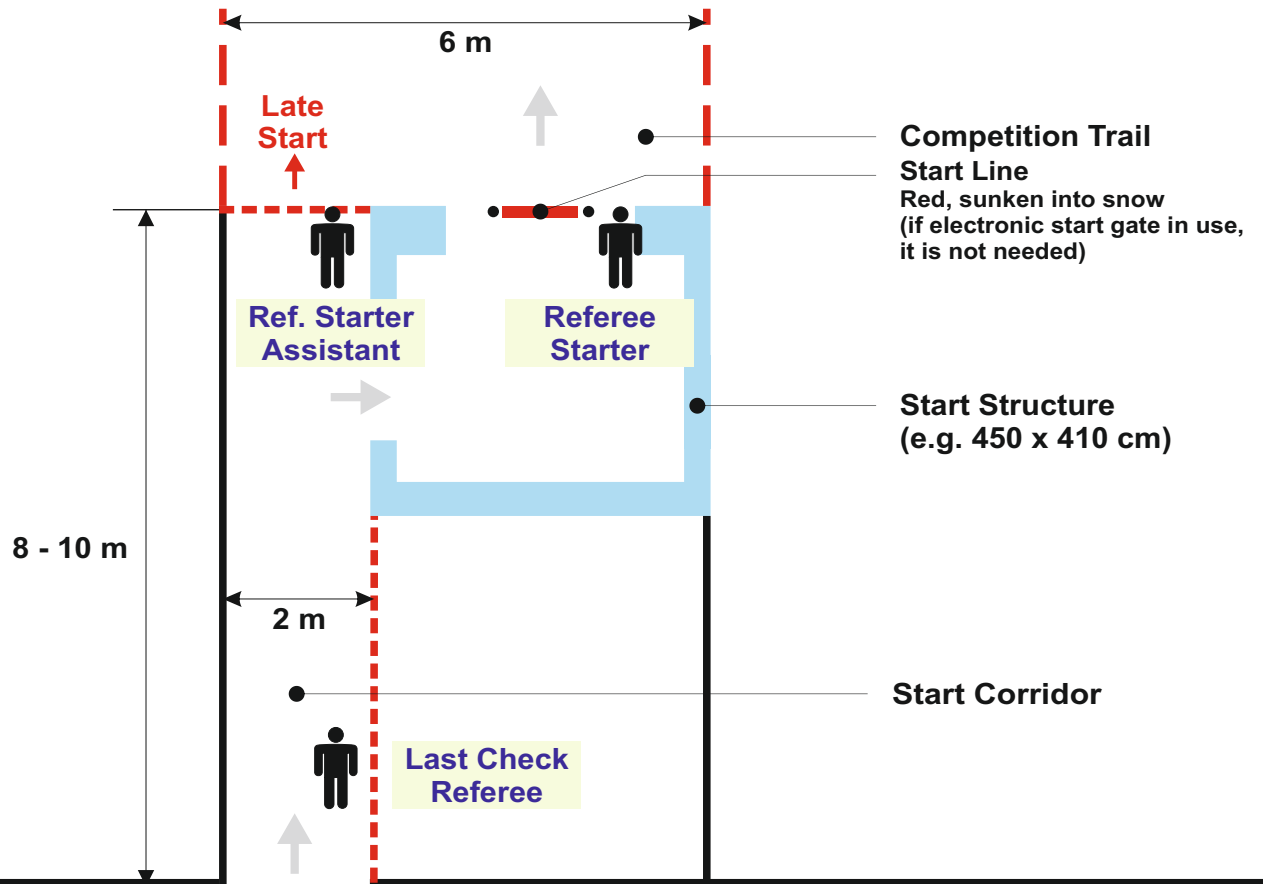
# COMPETITION COMMITTEE CHART



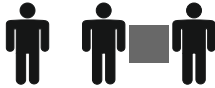
# BIATHLON STADIUM



# SINGLE START AREA



**Transponders Referees**



**Course Info board**  
*Showing the course in use*

**WARM-UP AREA**  
With enough space for to store warm-up clothing,  
and space for minimum 20 rifle racks



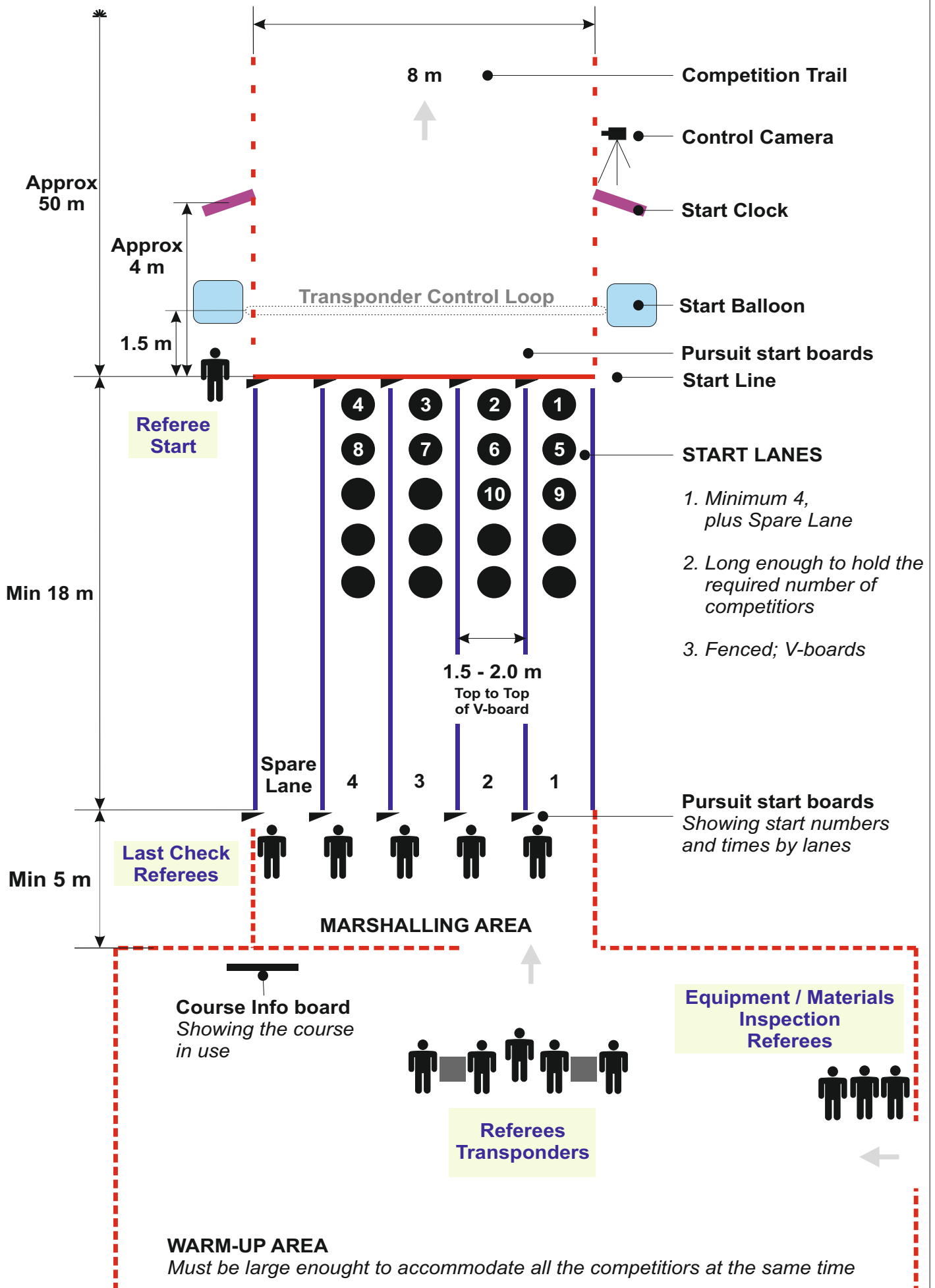
**Clothes Transport Officials**



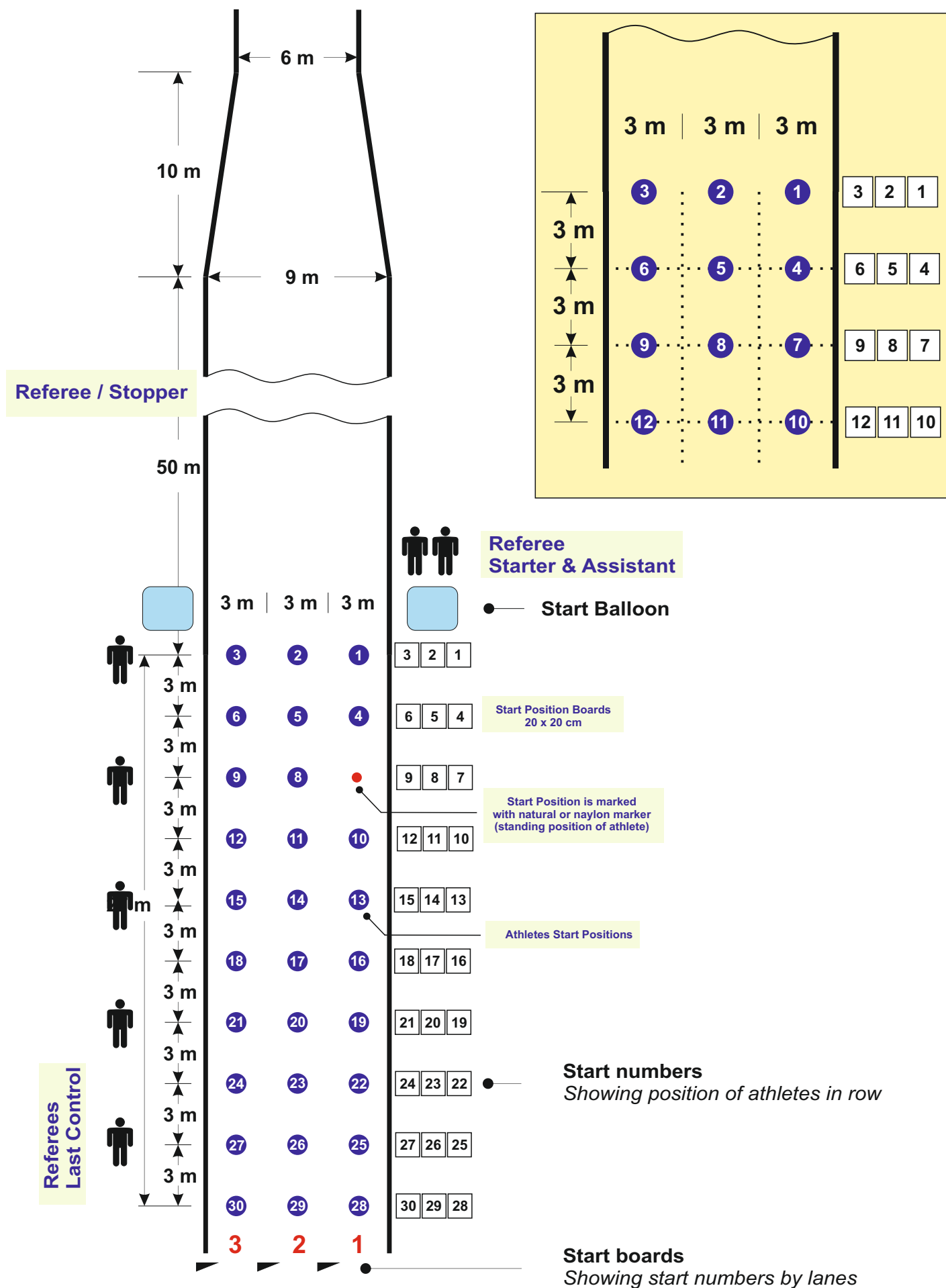
**Equipment / Materials Inspection Referees**



# PURSUIT START AREA

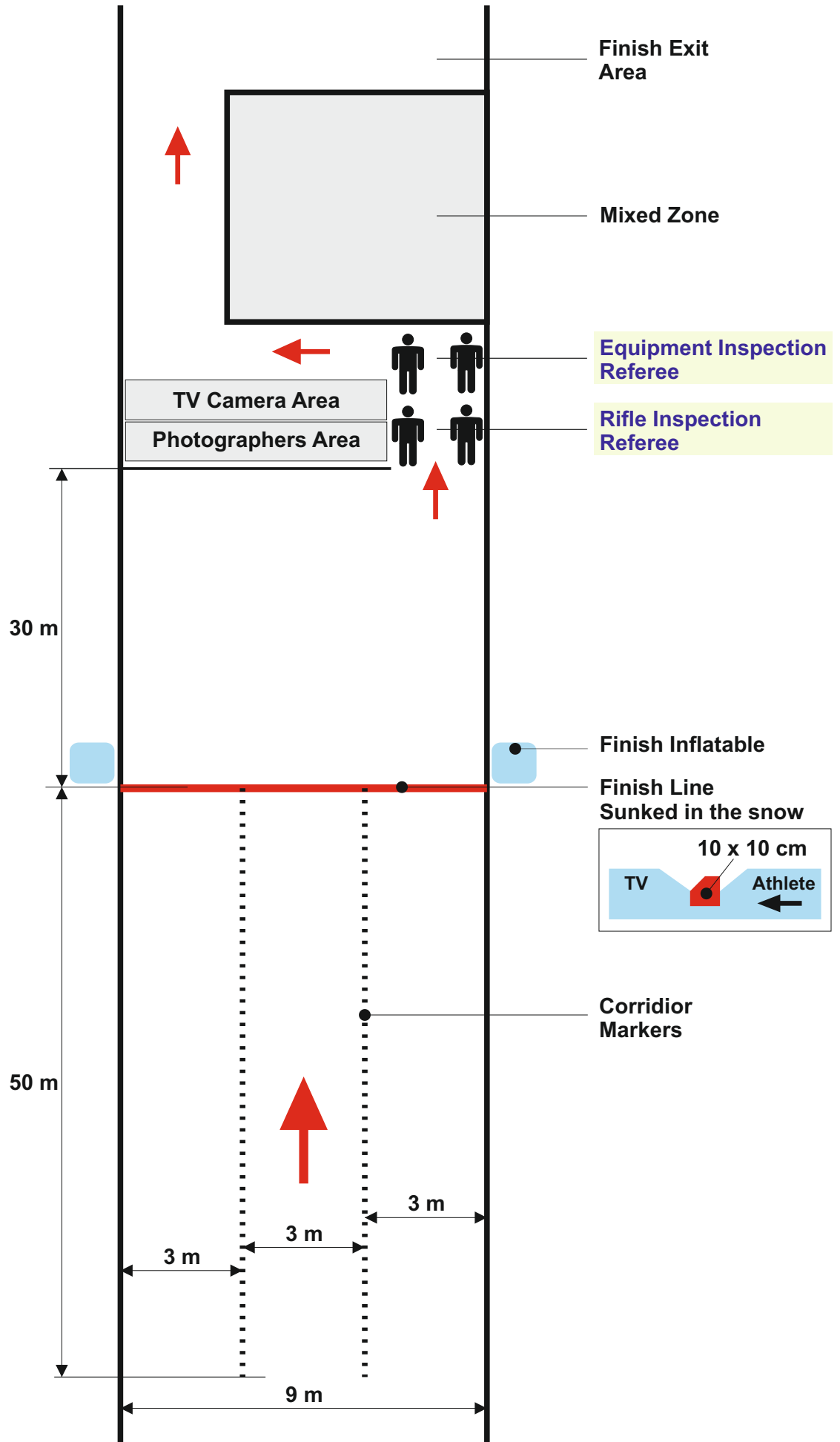


# MASS / RELAY START AREA

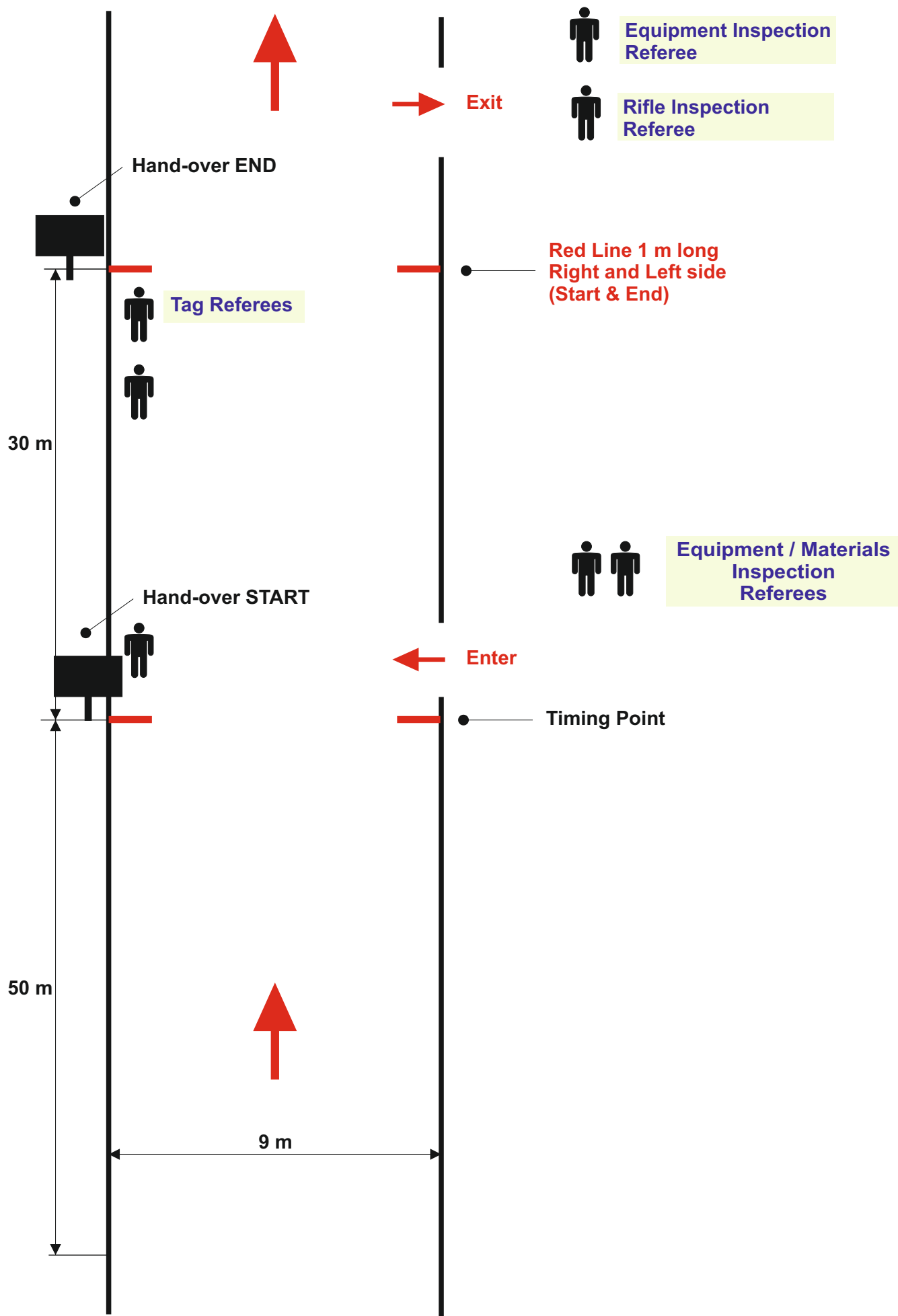




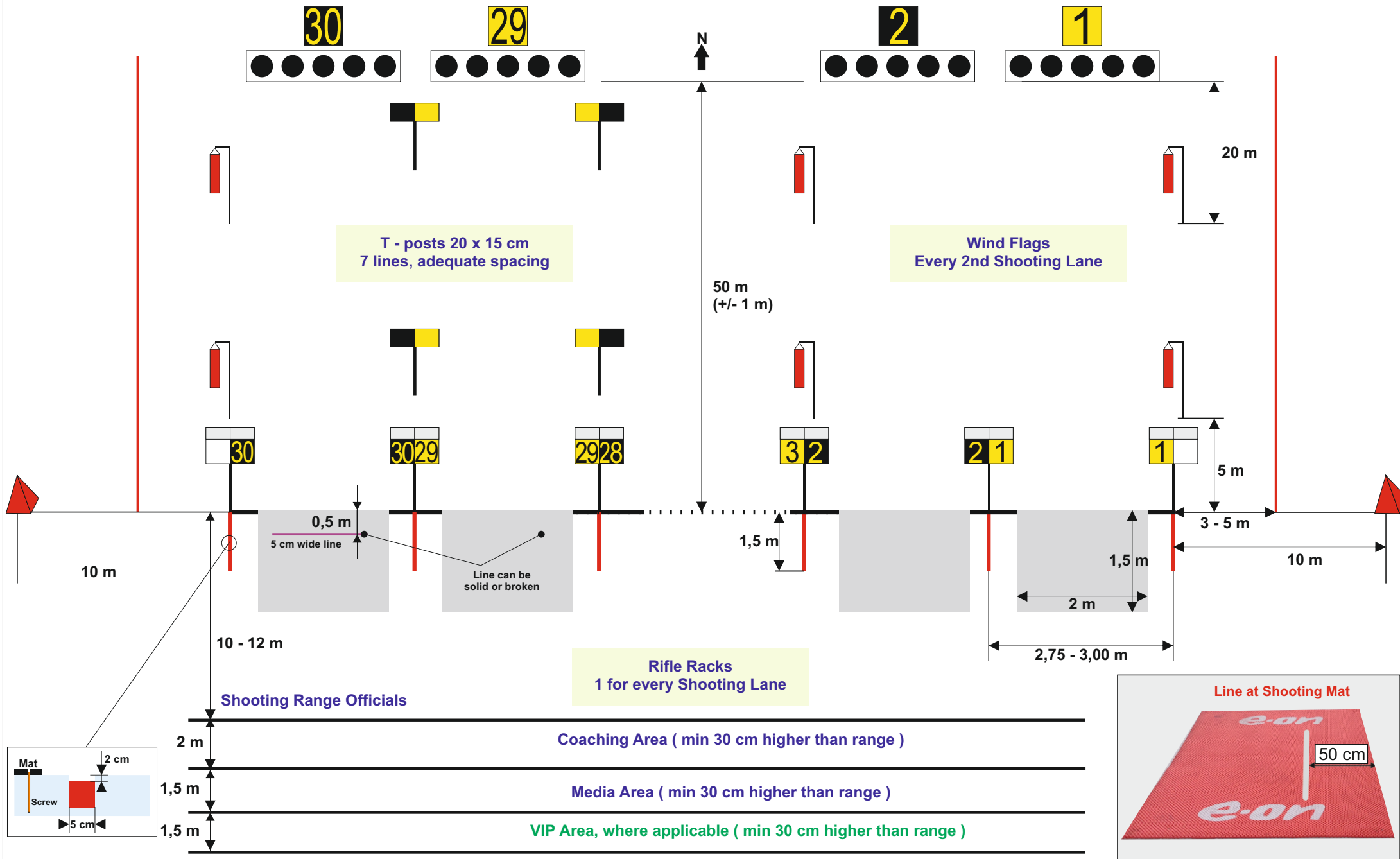
# FINISH AREA



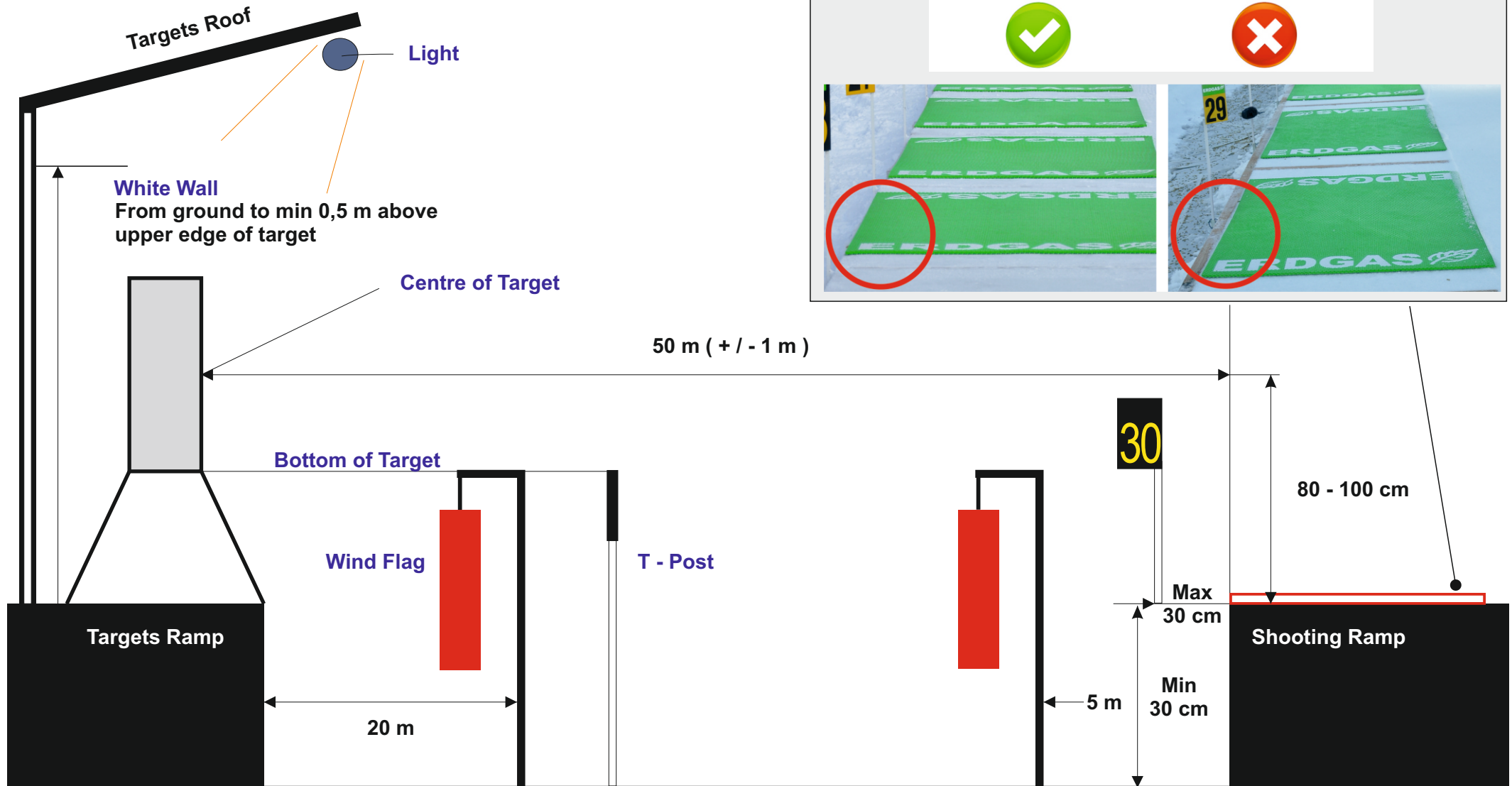
# RELAY HAND-OVER ZONE



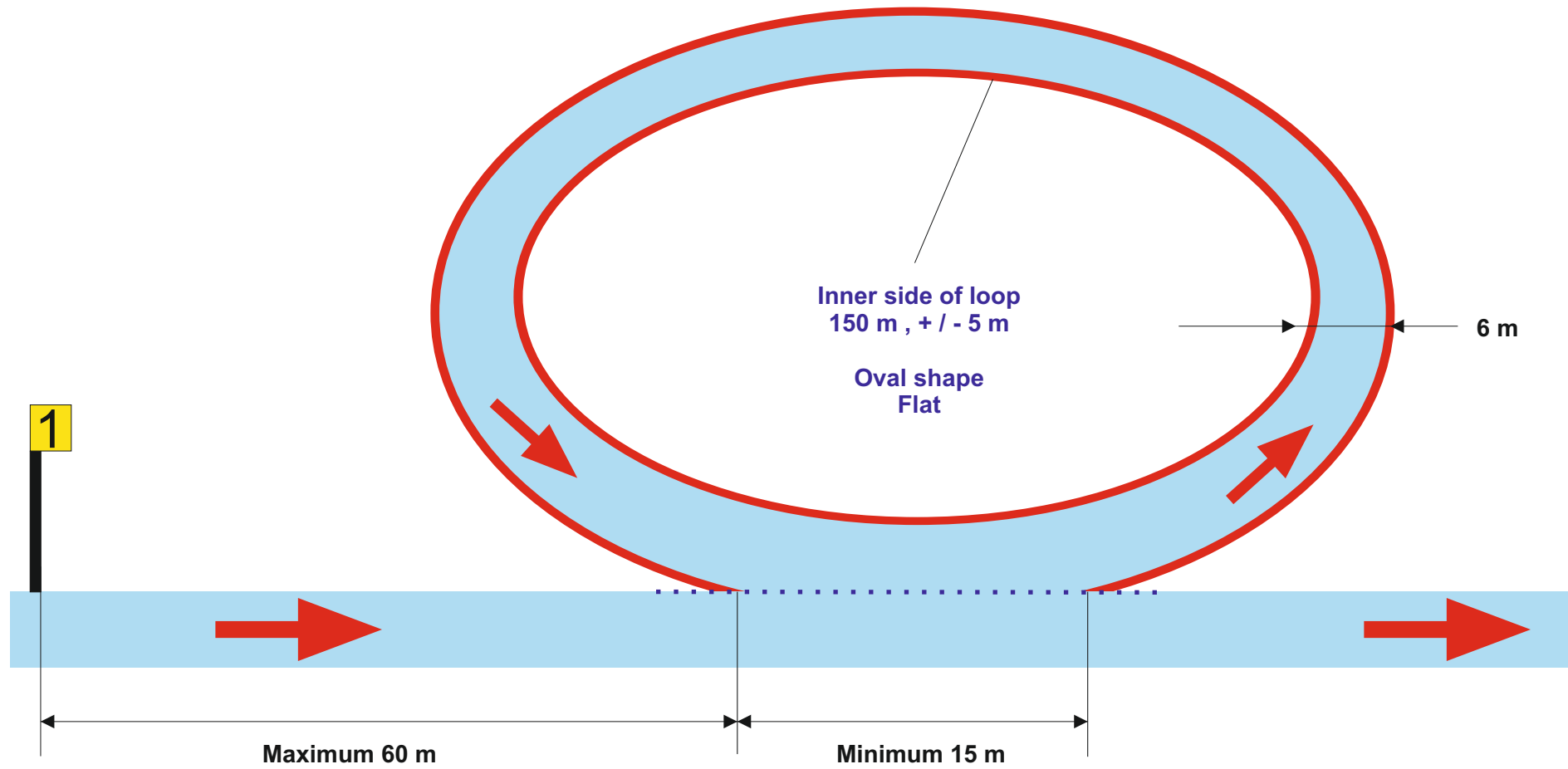
## SHOOTING RANGE - Top view



# SHOOTING RANGE - Side view



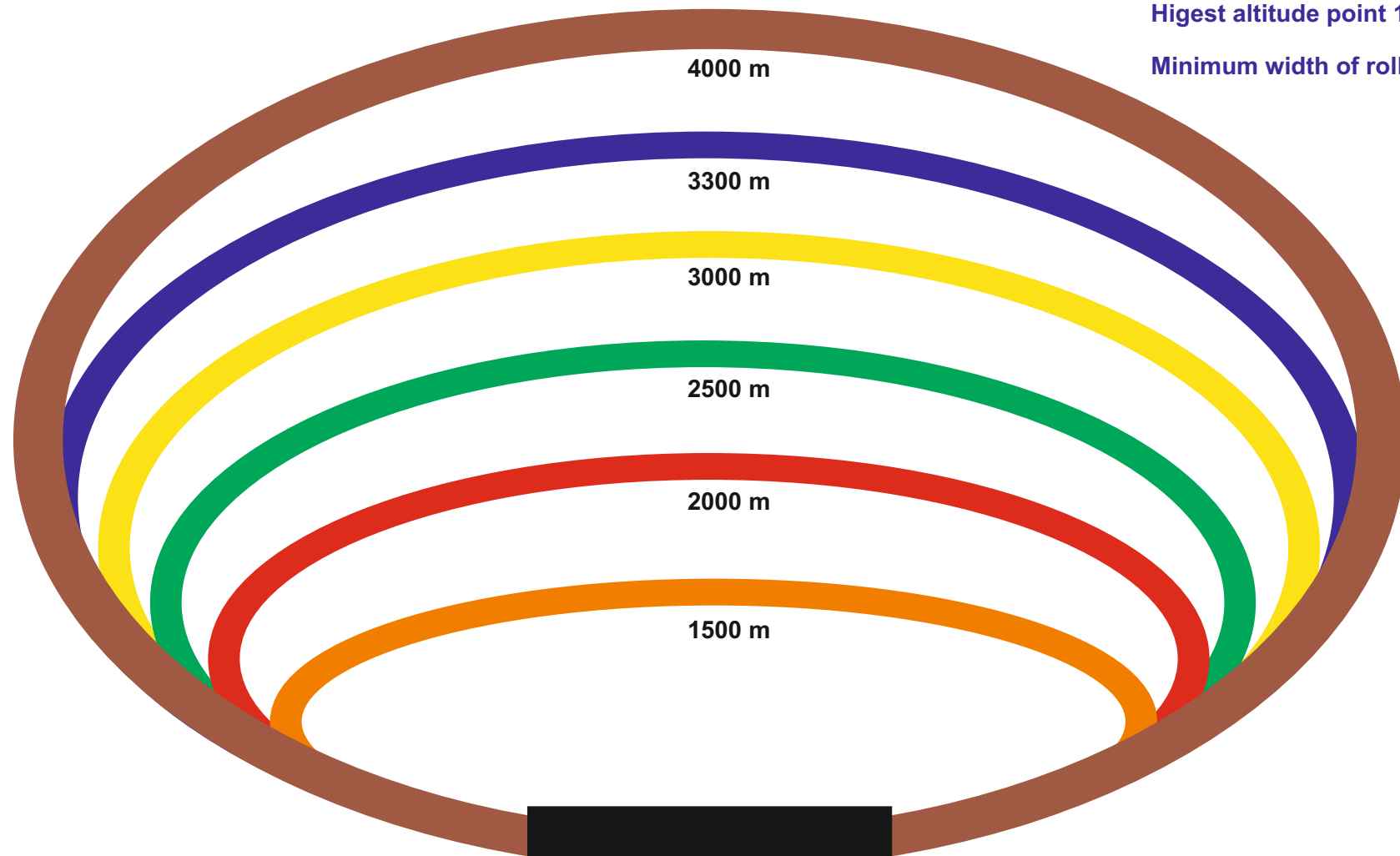
# PENALTY LOOP



# COURSES

Minimum width 6 m.  
Highest altitude point 1800 m.

Minimum width of roller ski course 3.5 m.



BIATHLON  
STADIUM

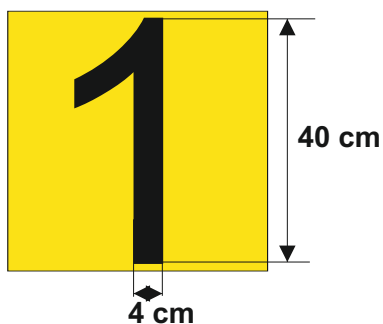
Warm-up loop  
400 m / close to stadium

## COURSES

Competition	Lenght	- 2 %	+ 5 %	Course	Total Climb	Color
MEN						
INDIVIDUAL	20,000 m	19,600 m	21,000 m	4,000 m	600 - 800 m	
SPRINT	10,000 m	9,800 m	10,500 m	3,300 m	300 - 450 m	
PURSUIT	12,500 m	12,250 m	13,125 m	2,500 m	350 - 500 m	
MASS START	15,000 m	14,700 m	15,750 m	3,000 m	400 - 600 m	
RELAY	4 x 7,500 m	7,350 m	7,875 m	2,500 m	200 - 300 m	
WOMEN						
INDIVIDUAL	15,000 m	14,700 m	15,750 m	3,000 m	400 - 600 m	
SPRINT	7,500 m	7,350 m	7,875 m	2,500 m	200 - 300 m	
PURSUIT	10,000 m	9,800 m	10,500 m	2,000 m	200 - 400 m	
MASS START	12,500 m	12,250 m	13,125 m	2,500 m	350 - 500 m	
RELAY	4 x 6,000 m	5,880 m	6,300 m	2,000 m	150 - 250 m	
WOMEN / MEN						
MIXED RELAY	W 2 x 6,000 m	5,880 m	6,300 m	2,000 m	150 - 250 m	
	M 2 x 7,500 m	7,350 m	7,875 m	2,500 m	200 - 300 m	
SINGLE MIXED RELAY	W 1 x 6,000 m	5,880 m	6,300 m	1,500 m	160 - 240 m	
	M 1 x 7,500 m	7,350 m	7,875 m	1,500 m	200 - 300 m	

## SHOOTING RANGE MARKINGS 1

**COLOR:** black/yellow or other contrasting colors as app. by the IBU

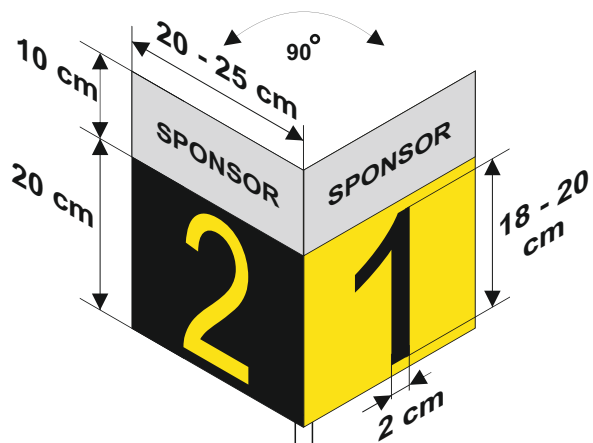


### TARGET NUMBER

Recommendable dimensions of plate  
45 x 45 cm

Immediately above center of target

### SHOOTING LANE NUMBER



NUMBER POST  
40 cm high  
(ground to number bottom)  
1 - 2 cm tick  
white

### STAND / PRONE MARK

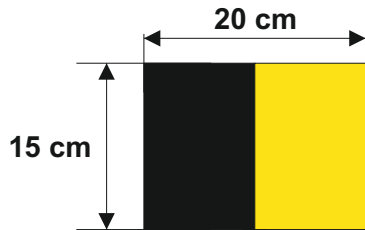




## SHOOTING RANGE MARKINGS 2

COLOR: black/yellow or other contrasting colors as app. by the IBU

### T - POST LANE MARKERS



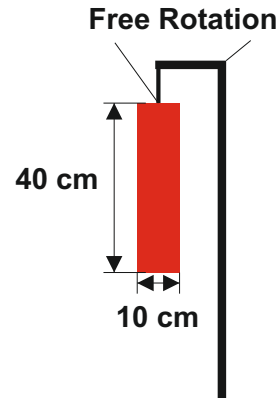
POST

White

7 lines  
between ramp and target



### WIND FLAG



Maximum weight 5 g.  
Adjustable post height.  
Silk or similar material.  
Highly visible color.

COLOR: contrasting colors

60 x 30 cm



60 x 30 cm



## RANGE MARKINGS WC & WCH

60 x 30 cm



60 x 30 cm



## COURSE MARKINGS 1

COLOR: contrasting colors

60 x 30 cm



60 x 30 cm



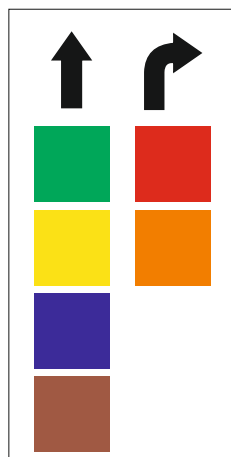
60 x 30 cm



60 x 30 cm

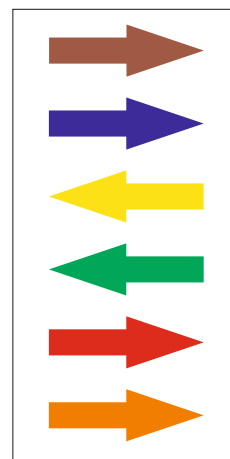


30 x 60 cm



Course  
Crossings A

30 x 60 cm



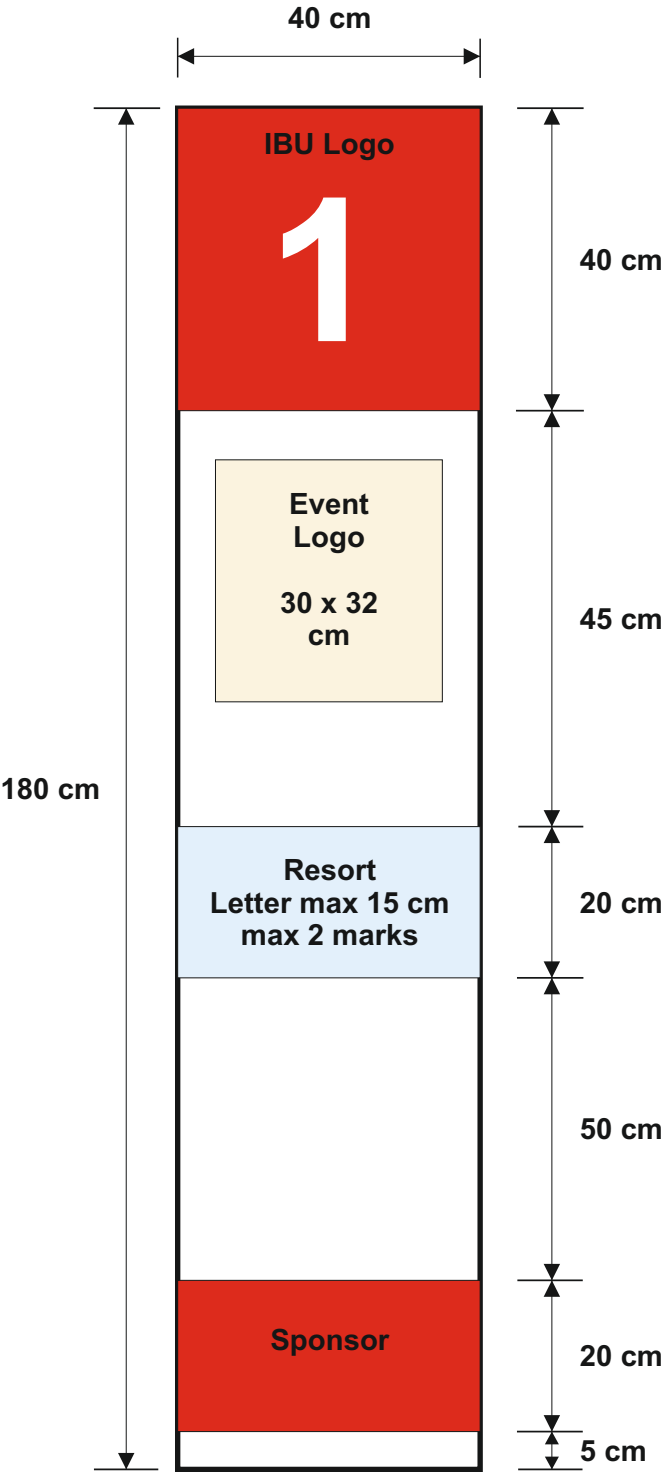
Course  
Crossings B

## COURSE MARKINGS WC & WCH

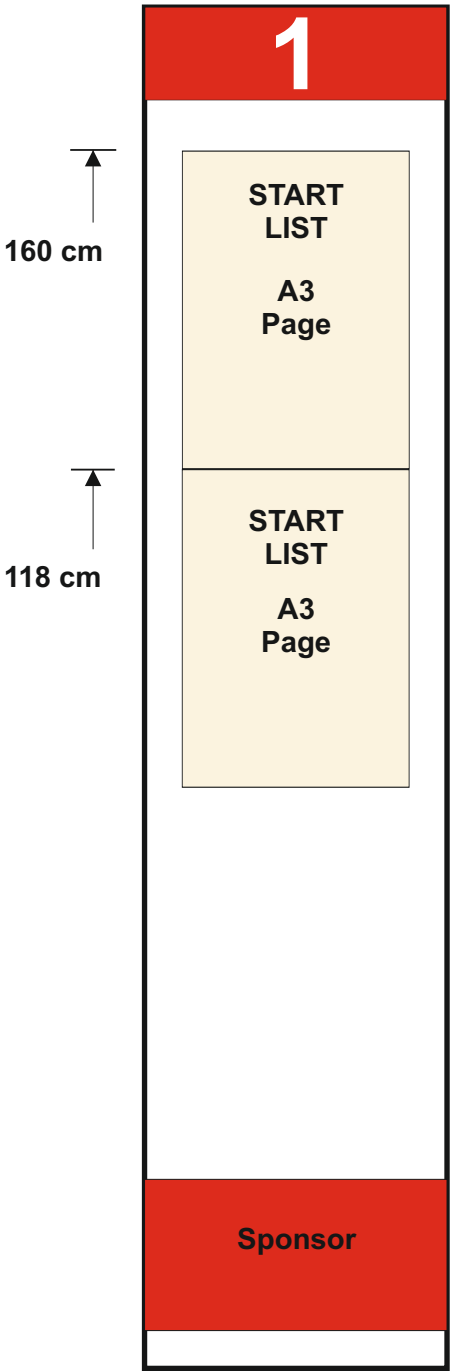


PURSUIT START BOARD - Start Line

FRONT SIDE



BACK SIDE



## DIVERSE MARKINGS / DIRECTIONS

COLOR: contrasting colors

60 x 30 cm

**COMPETITION  
OFFICE**



60 x 30 cm

**SKI TEST  
AREA**

60 x 30 cm

**EQUIPMENT /  
MATERIAL  
INSPECTION**

60 x 90 cm

**INFO**

60 x 30 cm

**TO START**



15 x 90 cm

1  
2  
3  
4  
5  
9a  
Z  
Y

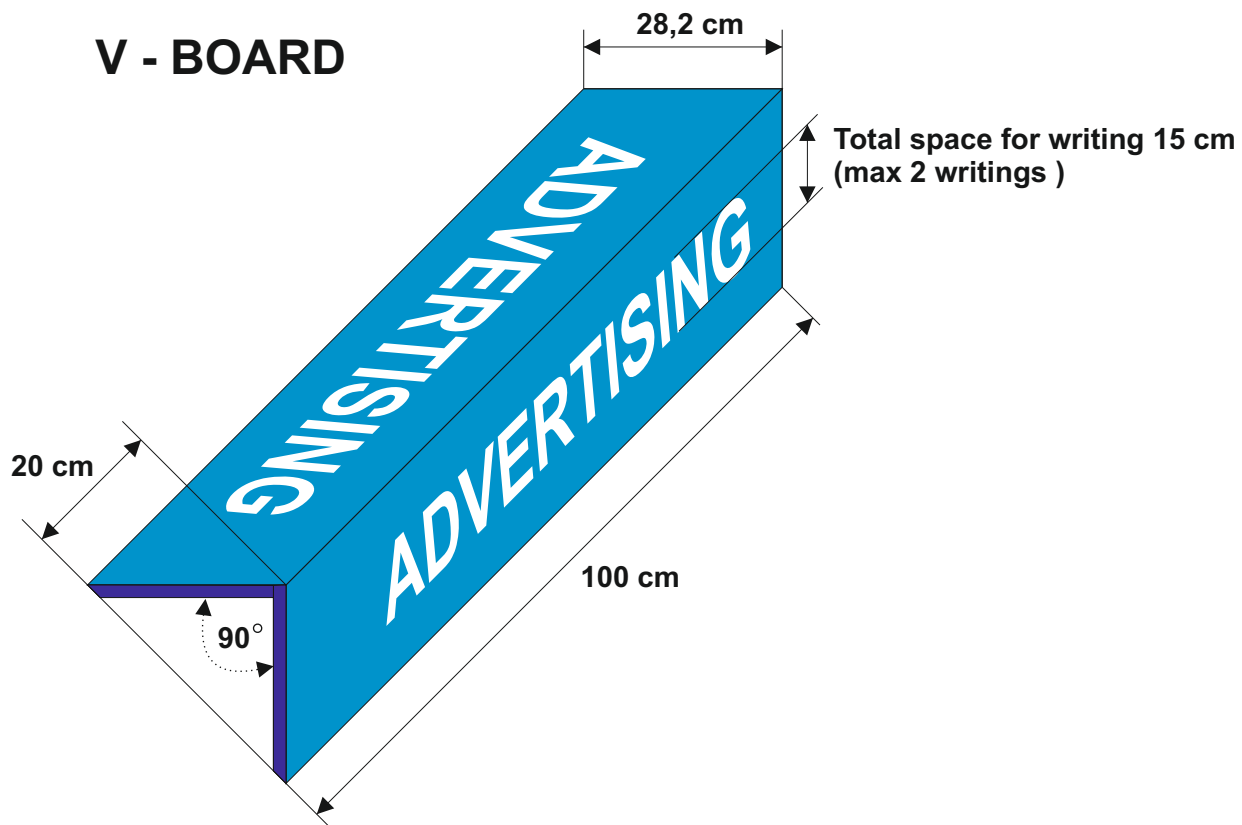
30 x 15 cm

**JURY ROOM**

30 x 15 cm

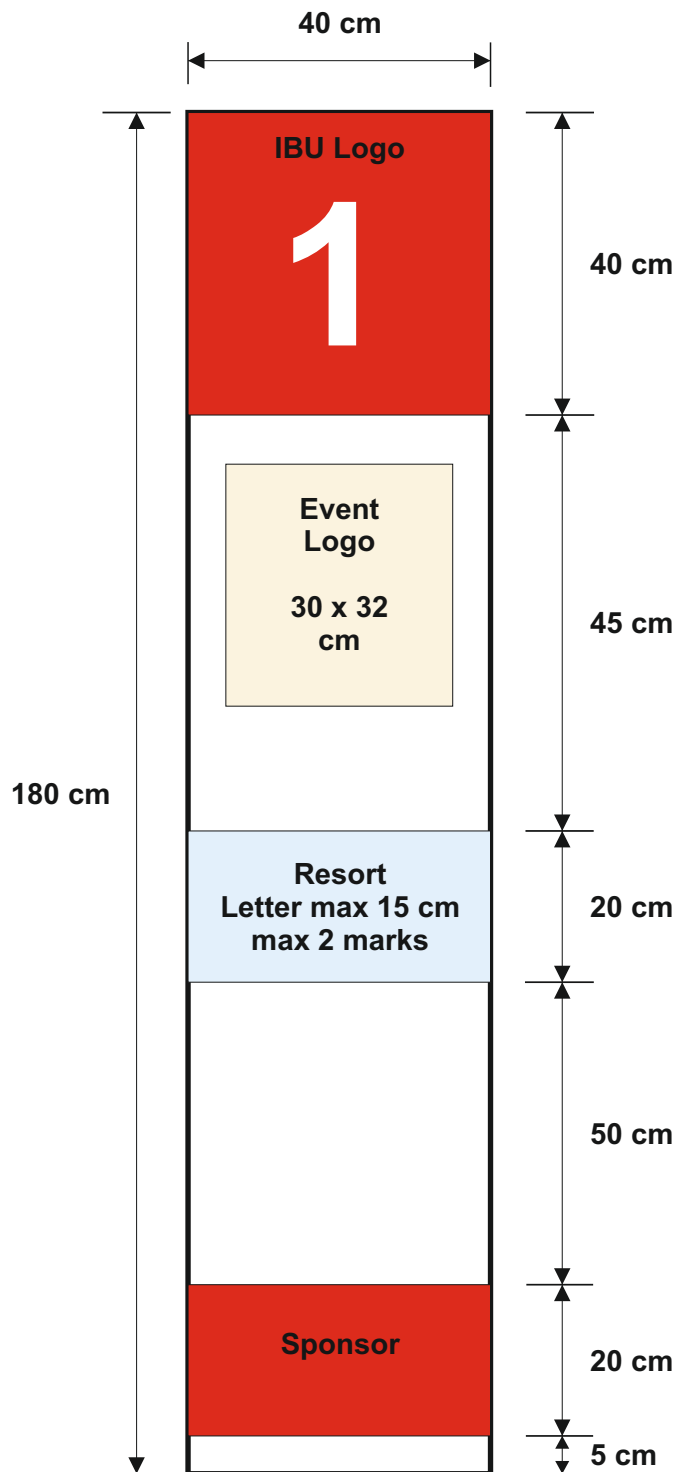
**8  
ANTI-DOPING**

## V - BOARD

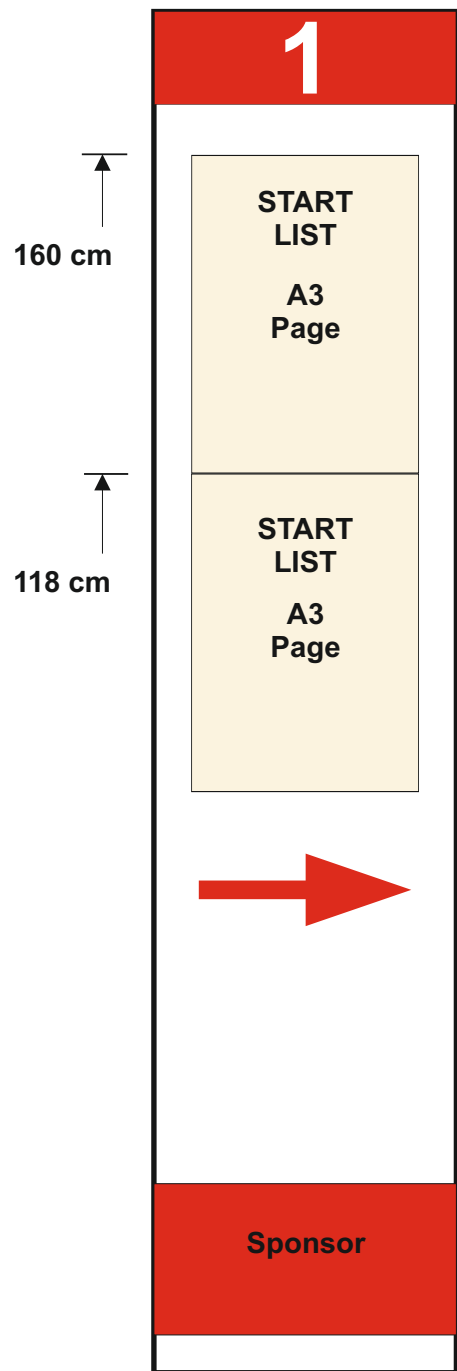


# PURSUIT START BOARD - Lane Entrance

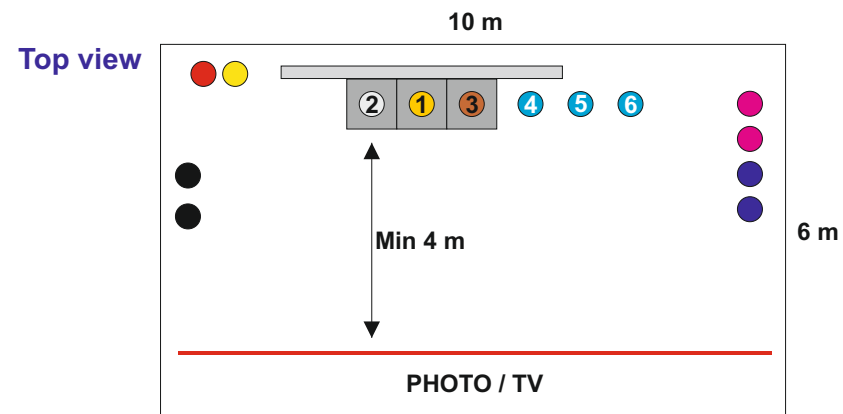
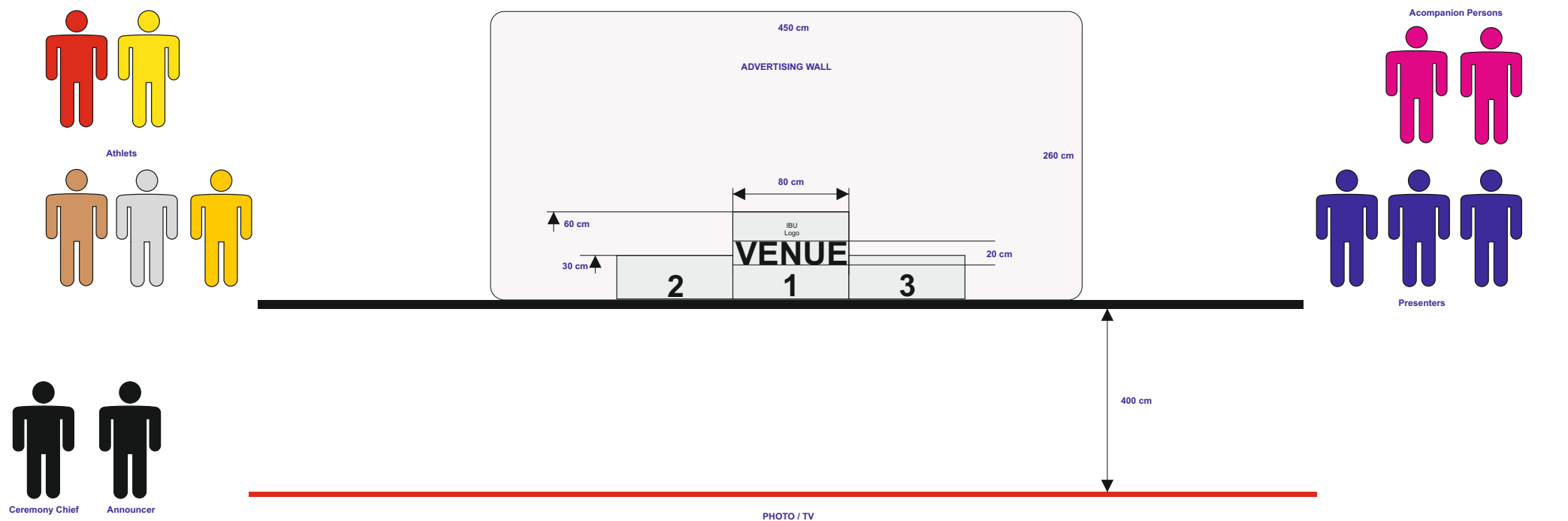
## FRONT SIDE



## BACK SIDE



# FLOWER CEREMONY AREA (set-up depending on stadium layout)



# TCs MEETING ROOM

Screen



10  
10  
10  
10  
10  
10  
10  
10  
10



12 12 12 12



12 12 12 12



12 12 12 12



12 12 12 12



12 12 12 12



12 12 12 12



12 12 12 12



12 12 12 12

15 15 15 15

13

13



11  
11  
11  
11  
11  
11  
11  
11  
11



14

- 1 IBU EB Official Representative
- 2 Chief of Competition
- 3 IBU Technical Delegate
- 4 IBU Race Director / Asst.
- 5 Competition Secretary
- 6 OC President
- 7 Reserve
- 8 Reserve
- 9 Translators (ENG, GER, RUS)
- 10 IBU IRs  
IBU Medical Delegate / Asst.  
IBU EB Members  
IBU HQ Officials
- 11 OC Competition Areas Chiefs  
OC Logistic Chiefs
- 12 Team Captains / at least 1 per NF
- 13 Timing Service
- 14 Technician
- 15 Media

# SHOOTING LANE RECORD

Official Name

NAME SURNAME

Date

01.01.2010

Lane numbers from

1

to

3

MEN

☐

WOMEN

☒

MIXED

☐

Individual

☐

Sprint

☐

Pursuit

☒

Mass Start

☐

Relay

☐

BIB NO.	X	LANE	SHOTS FIRED	X - MISSES	MISSES	COMMENTS PENALTIES
26	PRONE X STAND	2	<div> <div>X</div> <div>X</div> <div>X</div> <div>X</div> <div>X</div> </div> <div>3-SPARES</div> <div>  41                 </div>	<div> <div></div> <div>X</div> <div></div> <div></div> <div>X</div> </div>	2	

BIB NO.	X	LANE	SHOTS FIRED	X - MISSES	MISSES	COMMENTS PENALTIES
56	PRONE X STAND	1	<div> <div>X</div> <div>X</div> <div>X</div> <div>X</div> </div> <div>3-SPARES</div> <div>  29                 </div>	<div> <div></div> <div>X</div> <div></div> <div></div> <div></div> </div>	1	One shot not fired!

BIB NO.	X	LANE	SHOTS FIRED	X - MISSES	MISSES	COMMENTS PENALTIES
	PRONE  STAND		<div> <div></div> <div></div> <div></div> <div></div> <div></div> </div> <div>3-SPARES</div> <div> </div>	<div> <div></div> <div></div> <div></div> <div></div> <div></div> </div>		

BIB NO.	X	LANE	SHOTS FIRED	X - MISSES	MISSES	COMMENTS PENALTIES
	PRONE  STAND		<div> <div></div> <div></div> <div></div> <div></div> <div></div> </div> <div>3-SPARES</div> <div> </div>	<div> <div></div> <div></div> <div></div> <div></div> <div></div> </div>		

BIB NO.	X	LANE	SHOTS FIRED	X - MISSES	MISSES	COMMENTS PENALTIES
	PRONE  STAND		<div> <div></div> <div></div> <div></div> <div></div> <div></div> </div> <div>3-SPARES</div> <div> </div>	<div> <div></div> <div></div> <div></div> <div></div> <div></div> </div>		

BIB NO.	X	LANE	SHOTS FIRED	X - MISSES	MISSES	COMMENTS PENALTIES
	PRONE  STAND		<div> <div></div> <div></div> <div></div> <div></div> <div></div> </div> <div>3-SPARES</div> <div> </div>	<div> <div></div> <div></div> <div></div> <div></div> <div></div> </div>		

BIB NO.	X	LANE	SHOTS FIRED	X - MISSES	MISSES	COMMENTS PENALTIES
	PRONE  STAND		<div> <div></div> <div></div> <div></div> <div></div> <div></div> </div> <div>3-SPARES</div> <div> </div>	<div> <div></div> <div></div> <div></div> <div></div> <div></div> </div>		